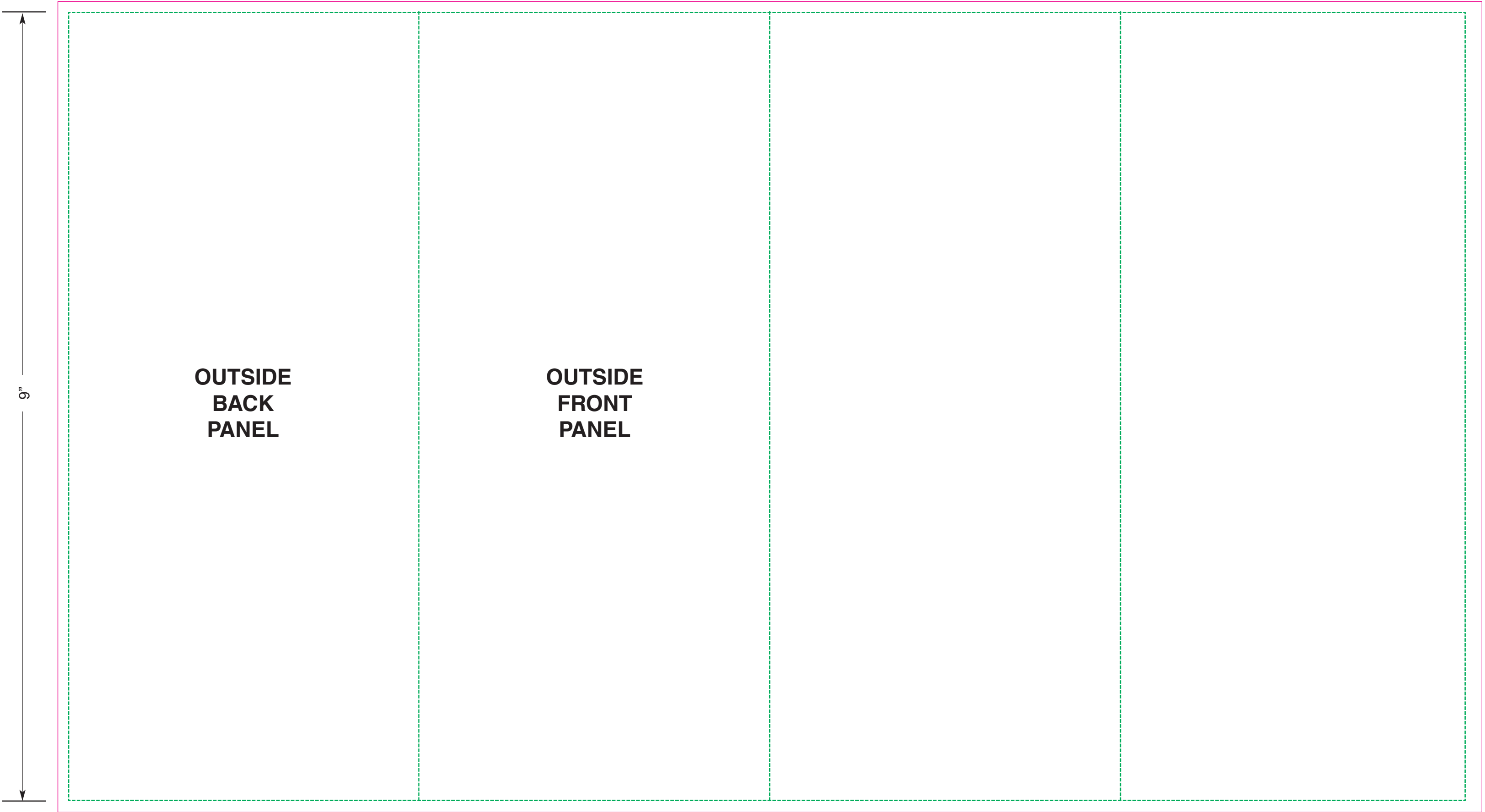


**9"x16" TEMPLATE - 4 Panels (9"x15.9375")
DOUBLE PARALLEL FOLD - OUTSIDE**

Notes:
-- Green dotted guides do not print.
-- Double Parallel Folds require panel adjustments.

-- Use "Inside" template for side that has "Front Inside" panel.
-- Use "Outside" template for side that has "Front Outside" panel.



BLEED AREA

BACK OUTSIDE PANEL - 4"

FRONT OUTSIDE PANEL - 4"

NESTING PANEL - 4"

NESTING PANEL - 3.9375"

16"